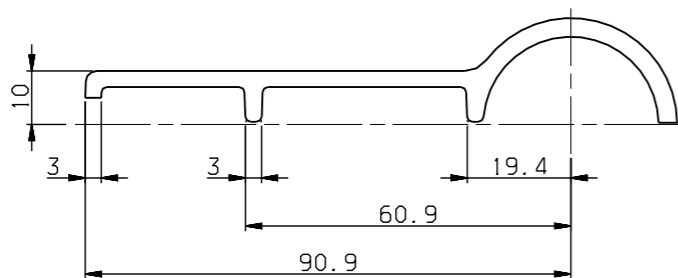
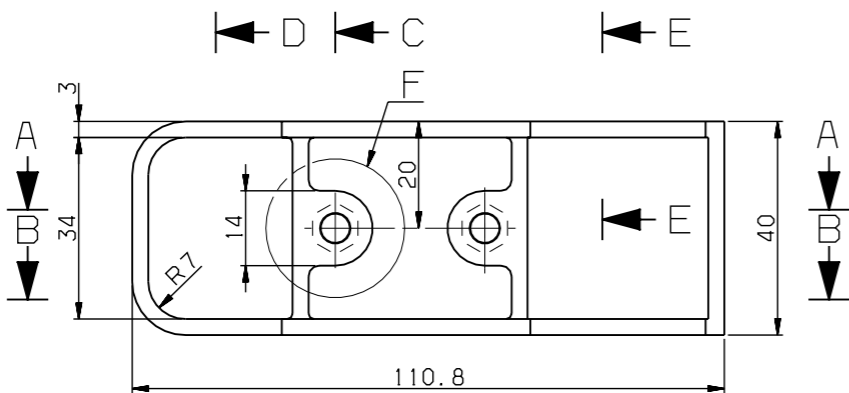
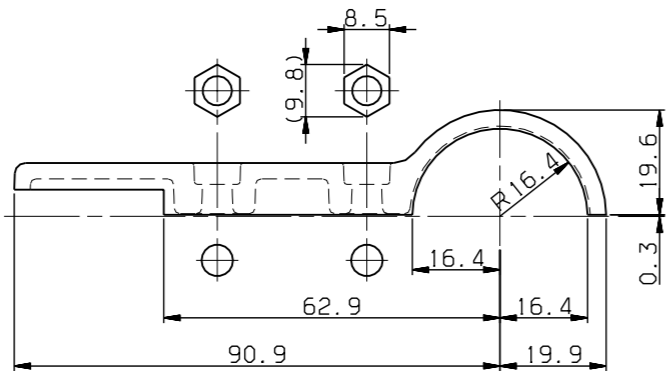
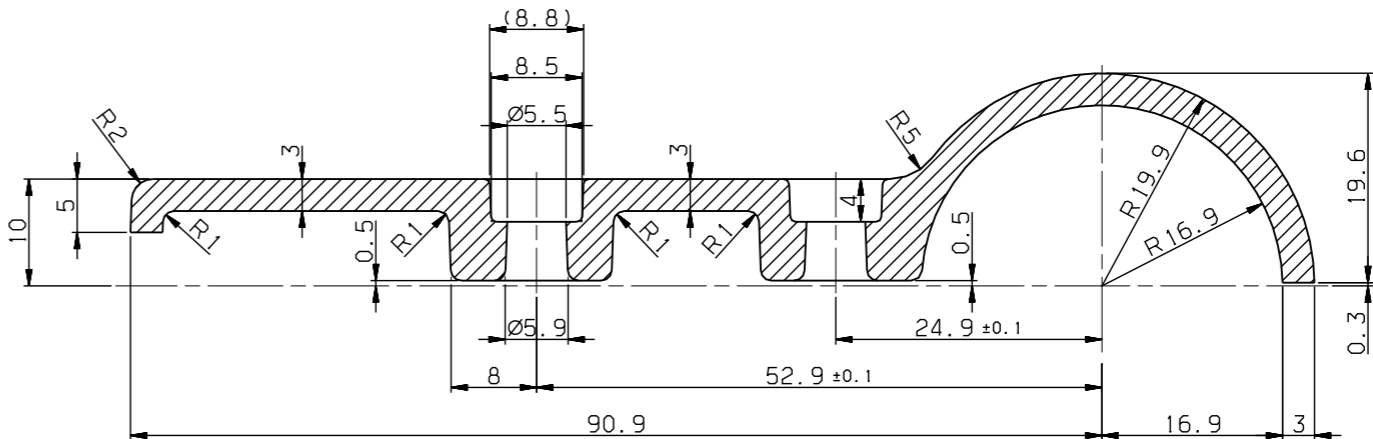


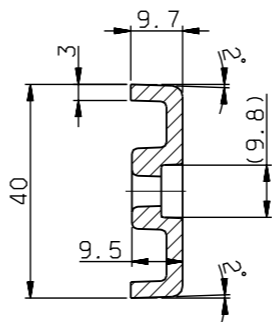
작업규격 SPECIFICATION APPLIED	



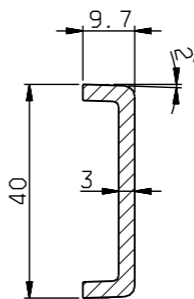
SECTION B-B



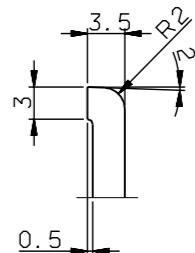
SECTION A-A
SCALE=2/1



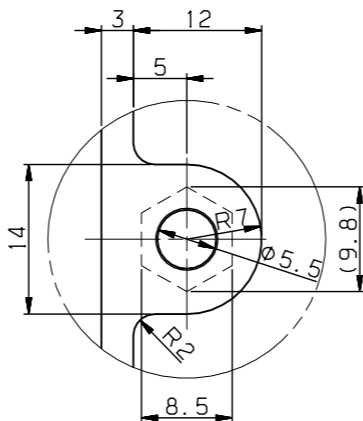
SECTION C-C



SECTION D-D



SECTION E-E



DETAIL F
SCALE=2/1

NOTE

1. THIS PART SHALL BE MASS-PRODUCED AFTER SAMPLE'S APPROVAL.
2. THE SURFACE SHALL BE PAINTED BY THE NICHEL AFTER SANDING.
3. INDIRECT RADIUS SHALL BE 0.5mm.
4. THE SHARP EDGE SHALL BE REMOVED.

B	단위	mm	inch	mm	inch																										
	~40	2	4	~30	2	3																									
	~30	1	1.5	~10	1	1.5																									
	<3	0.5	1	<3	0.5	1																									
	~3150	-	7	~1600	4	5																									
	~800	3	4	~400	2	3																									
	~200	1.5	2	~100	1	1.5																									
	~100	1	1.5	~100	1	1.5																									
	등급	A	B	등급	A	B																									
	기타	주조	CASTING (±)	기타	주조	CASTING (±)																									
A	~20M	8	14	24	~15M	7	12	21																							
	~12M	6	10	18	~12M	6	10	18																							
	~8M	5	8	14	~8M	5	8	14																							
	~4M	4	6	11	~4M	4	6	11																							
	~2M	3	4	8	~2M	3	4	8																							
	~1M	2	3	6	~1M	2	3	6																							
	~315	1	2	4	~315	1	2	4																							
	~120	1	2	3	~120	1	2	3																							
	~30	1	1	1	~30	1	1	1																							
	등급	A	B	C	등급	A	B	C																							
	기타	주조	WELDING (±)	기타	주조	WELDING (±)																									
	~20M	-	6.0 ~ 8.0	~20M	-	6.0 ~ 8.0																									
	~15M	-	5.0 ~ 7.0	~15M	-	5.0 ~ 7.0																									
	~12M	-	4.0 ~ 6.0	~12M	-	4.0 ~ 6.0																									
	~8M	-	3.0 ~ 5.0	~8M	-	3.0 ~ 5.0																									
	~4M	0.8	2.0 ~ 4.0	~4M	0.8	2.0 ~ 4.0																									
	~2M	0.5	1.2 ~ 3.0	~2M	0.5	1.2 ~ 3.0																									
	~1M	0.3	0.8 ~ 2.0	~1M	0.3	0.8 ~ 2.0																									
	~315	0.2	0.5 ~ 1.2	~315	0.2	0.5 ~ 1.2																									
	~120	0.15	0.3 ~ 0.8	~120	0.15	0.3 ~ 0.8																									
	~30	0.1	0.2 ~ 0.5	~30	0.1	0.2 ~ 0.5																									
	3~6	0.05	0.1 ~ 0.2	3~6	0.05	0.1 ~ 0.2																									
	등급	A	B	C	등급	A	B	C																							
기타								가공	MACHINING (±)	기타								가공	MACHINING (±)												
규격치외업은 일반公差								GENERAL TOLERANCE								규격치외업은 일반公差								GENERAL TOLERANCE							

기호	일자	변경	내역	설계번호	설계	검도	승인	참고
MARK	DATE	DETAIL OF REVISION(E.C. ZONE)	E.C. NO.	DGN	CHK	APP	REF. NO.	FPP09789

부품 번호 PART NO.		품 명 DESCRIPTION		재 질 MATERIAL	수량 Q'TY	중량 W.T	비 고 REMARKS	
H.G.RYU 2008.10.15		재질 MAT'L ZDC	명 도 0 T I T L E	GLASS, FIXTURE, TYPE C				
H.S.KIM 2008.10.15		총중량 G.W						
Y.D.KIM 2008.10.10		일 번 공 차 MC WD CT	도면 번호 DRG. NO	MS	RFP75011ANO		Ver.	00
S.H.SONG 2008.10.10		B B B	SCALE 1/1		매수 SHEET 1 of 1		Rev.	--
		SIZE A2						
참고번호 REF. NO.		HYUNDAI Rotem 현대로템주식회사						
FPP09789								
		305101						
		RFP-						
		변-PRJT						
		정리번호						